



CUSTOMER:

Customer Name: ALINVEST

PROJECT:

Project Code: E2558

Project Name: ALFAGEN

DOCUMENT INFORMATION:



Document Title: Equipment Spider Diagram

Contractor File Name: 2558-3323-THD-E-DWG-SPD

Contractor Revision Number: A

Customer File Name: -

Customer Revision Number: -

						CONTRACTOR		CONTRACTOR dwg number 2558-3323-THD-E-DWG-SPD	Rev. A	Project Code E2558	Project Name ALFAGEN						
										Document Title Equipment Spider Diagram			Scale 1:1				
A	29/11/2025	INITIAL VERSION		RORI	RORI					RORI	DESIGNED: RORI			DRAWN: RORI	APPROVED: RORI	Format A3	
Rev.	Date	Revisions description		Designed	Draw	Approved	CLIENT	CLIENT dwg number -	Rev. -	DATE: 24/11/2025	DATE: 24/11/2025	DATE: 24/11/2025	Sheet 1 OF x				
1		2	3			4				5	6	7	8	9	10	11	12

POWER AND CONTROL PANEL


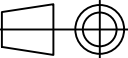
r45.41-3323-THD-GEN01-PCP01

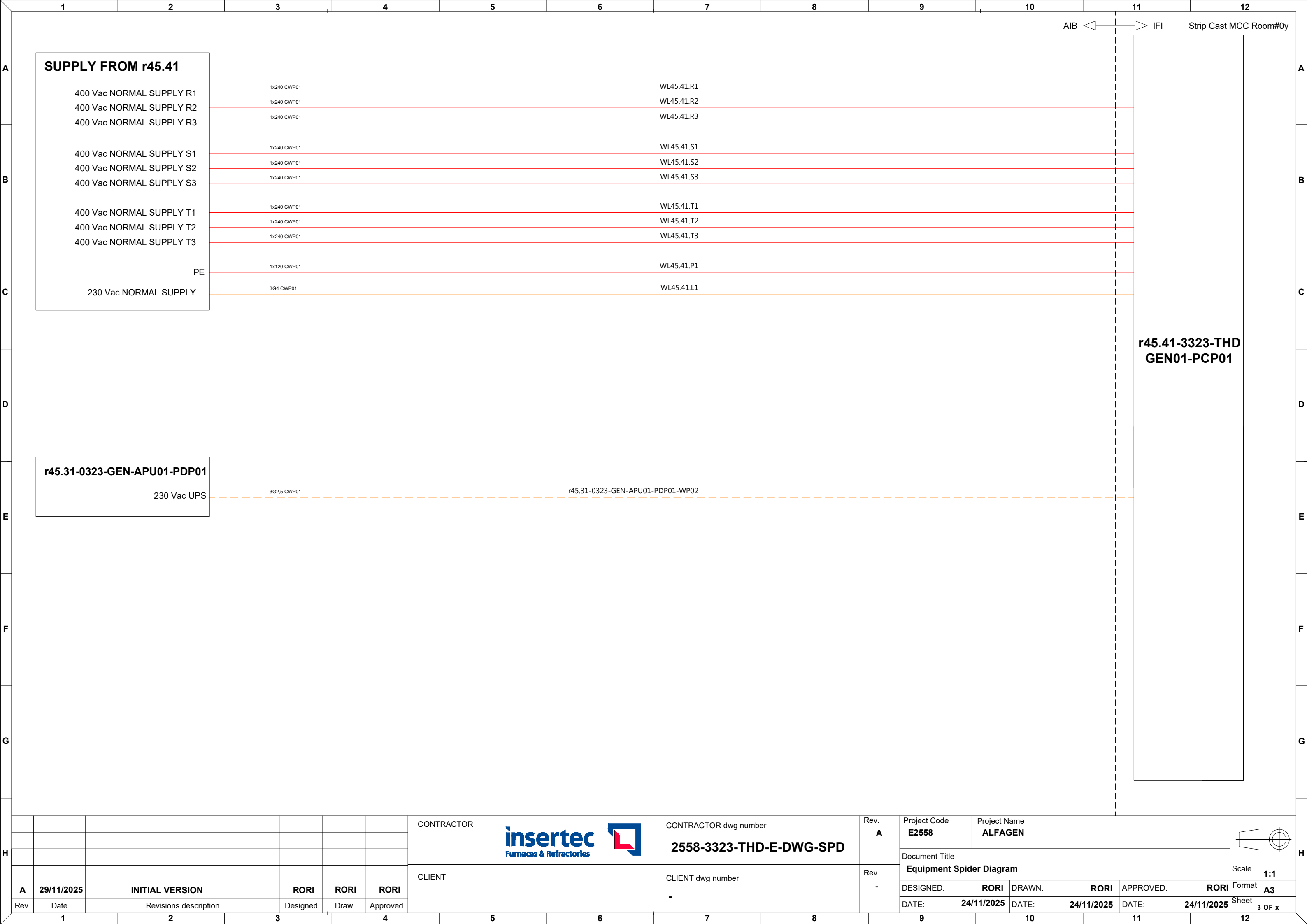
LEGEND

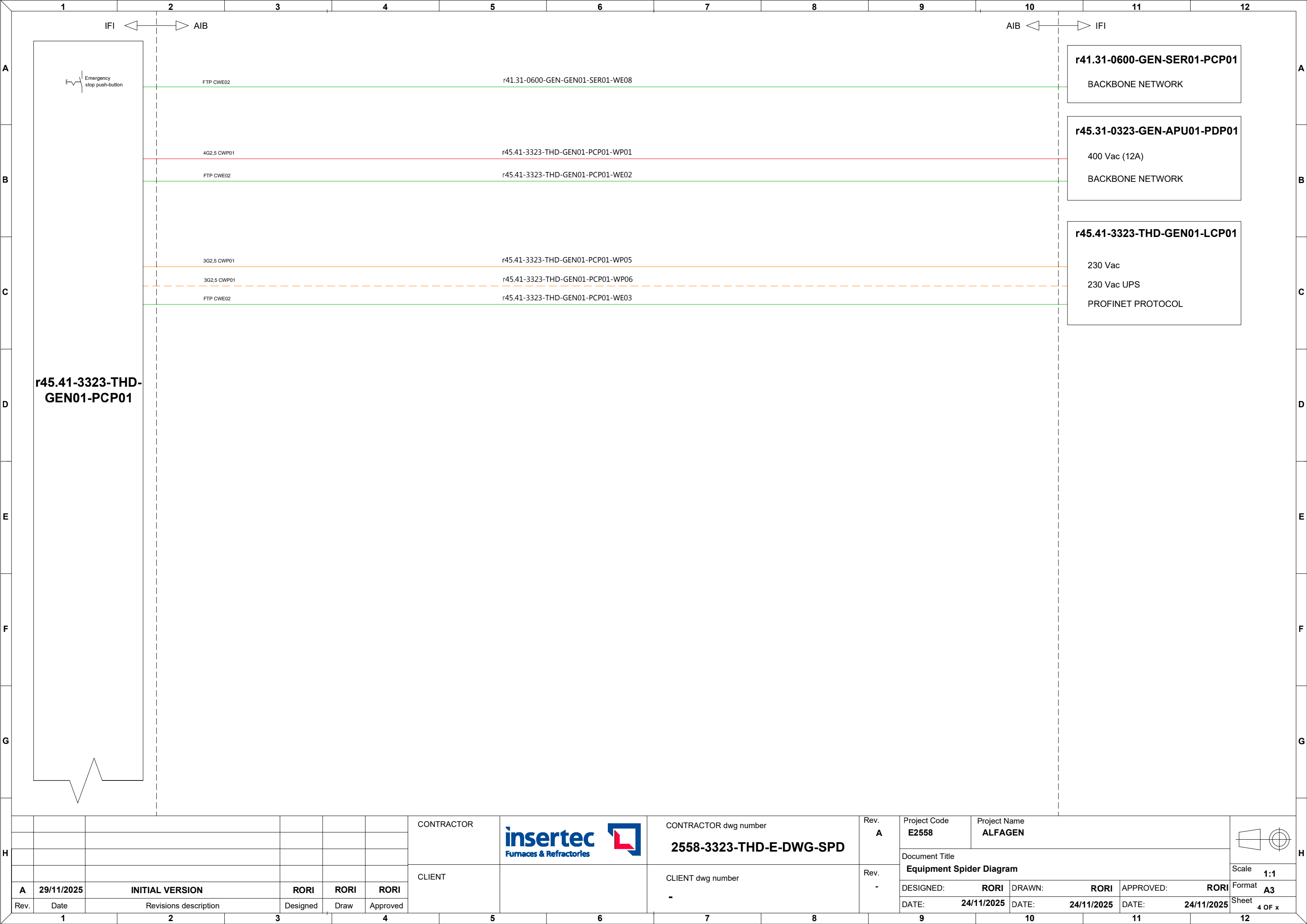
	400Vac Power supply		Regular control signals
	400Vac UPS power supply		Analog & shielded signals
	230Vac Power supply		T/C connection
	230Vac UPS power supply		Communication connection

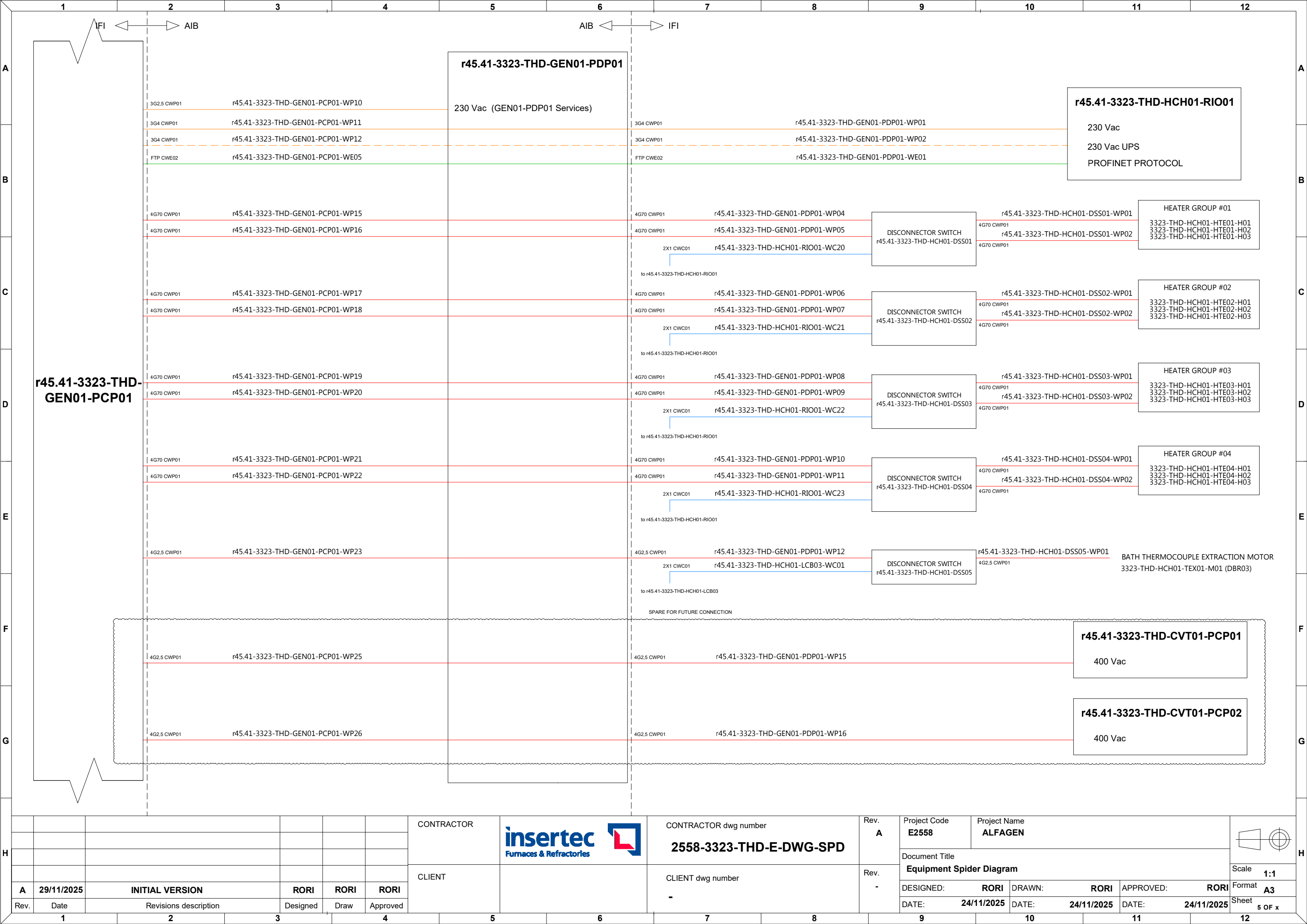
CATEGORY

Power cables
CWP01: Regular power cables
CWP02: Shielded power cable
CWP03: Flexible power cables
CWP04: Regular high temperature power cables
CWP05: Shielded high temperature power cables
CWP06: General use power cable
Instrumentation and control cables
CWC01: Regular instrumentation control cables
CWC02: Shielded instrumentation control cables
CWC03: Thermocouple cable
CWC04: Flexible instrumentation control cables
CWC05: High voltage cables for ignition transformers
CWC06: Regular high temperature instrumentation control cables
CWC07: Shielded high temperature instrumentation control cables
Communication cables
CWE01: Fieldbus communication cable (Inside cabinets)
CWE02: Fieldbus communication cable (Outside cabinets)
CWE03: Optic fibre communication cable

						CONTRACTOR		CONTRACTOR dwg number 2558-3323-THD-E-DWG-SPD	Rev. A	Project Code E2558	Project Name ALFAGEN			
										Document Title Equipment Spider Diagram			Scale 1:1	
A	29/11/2025	INITIAL VERSION		RORI	RORI					DESIGNED: RORI	DRAWN: RORI	APPROVED: RORI	Format A3	
Rev.	Date	Revisions description		Designed	Draw	Approved	CLIENT	CLIENT dwg number -	Rev. -	DATE: 24/11/2025	DATE: 24/11/2025	DATE: 24/11/2025	Sheet 2 OF x	
1		2	3	4		5				9	10	11	12	







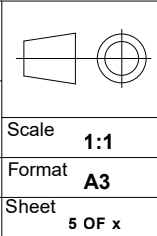
A	29/11/2025	INITIAL VERSION		RORI	RORI
Rev.	Date	Revisions description		Designed	Draw
				Approved	

CONTRACTOR					
CLIENT					



CONTRACTOR dwg number	2558-3323-THD-E-DWG-SPD
CLIENT dwg number	-

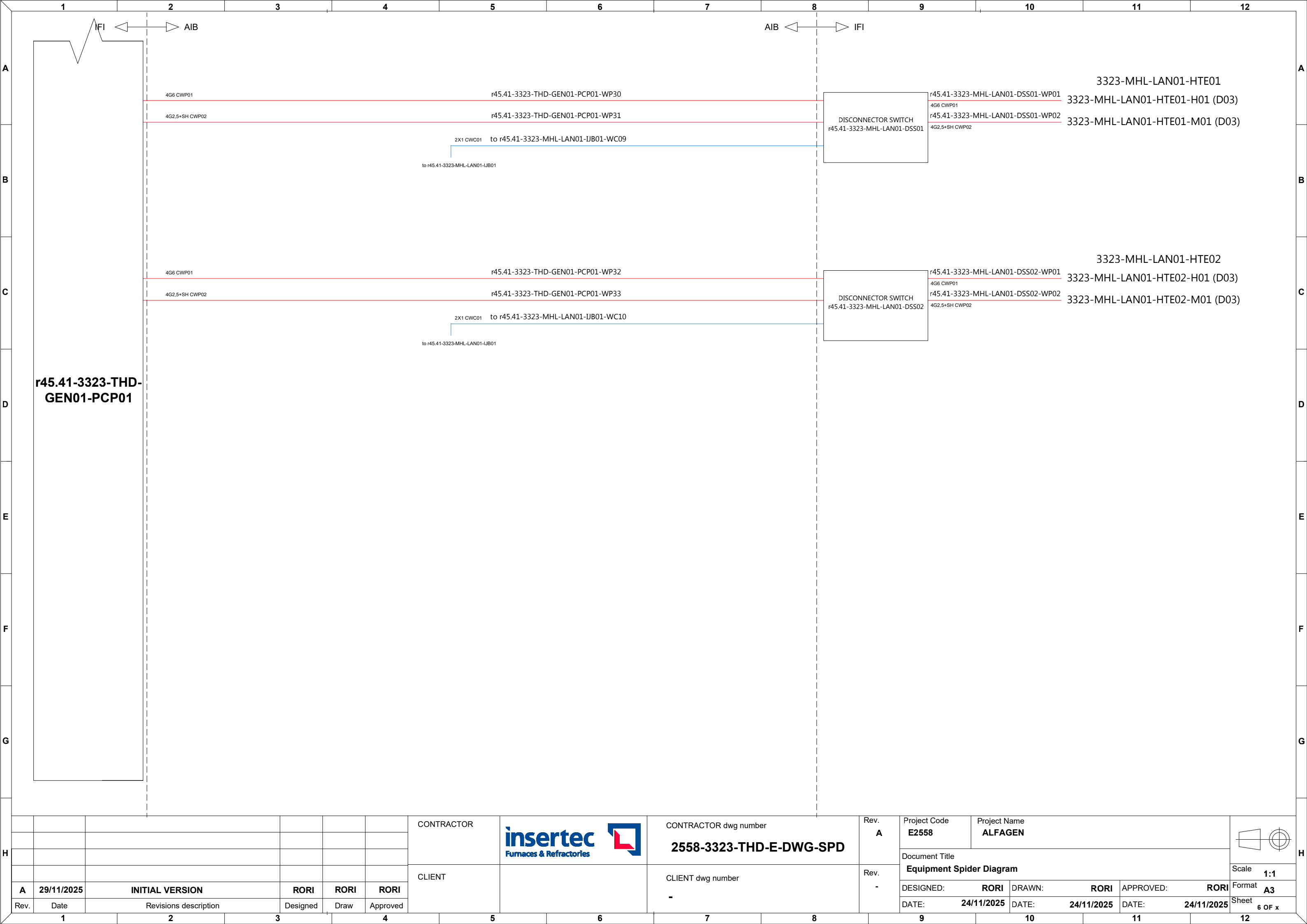
Rev. A	Project Code E2558	Project Name ALFAGEN		
	Document Title Equipment Spider Diagram			
Rev. -	DESIGNED: RORI	DRAWN: RORI	APPROVED: RORI	
	DATE: 24/11/2025	DATE: 24/11/2025	DATE: 24/11/2025	


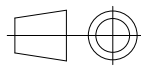


Scale 1:1

Format A3

Sheet 5 OF x











H							CONTRACTOR		CONTRACTOR dwg number	Rev. A	Project Code	Project Name												
												E2558	ALFAGEN											
							CLIENT		CLIENT dwg number	Rev. -	Document Title				Scale 1:1									
											Equipment Spider Diagram													
	A	29/11/2025	INITIAL VERSION			RORI					RORI	RORI					DESIGNED: RORI	DRAWN: RORI	APPROVED: RORI	Format A3				
Rev.	Date	Revisions description			Designed	Draw	Approved					DATE: 24/11/2025	DATE: 24/11/2025	DATE: 24/11/2025	Sheet 6 OF x									
	1		2		3		4		5		6		7		8		9		10		11		12	

LOCAL CONTROL PANEL


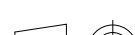
r45.41-3323-THD-GEN01-LCP01

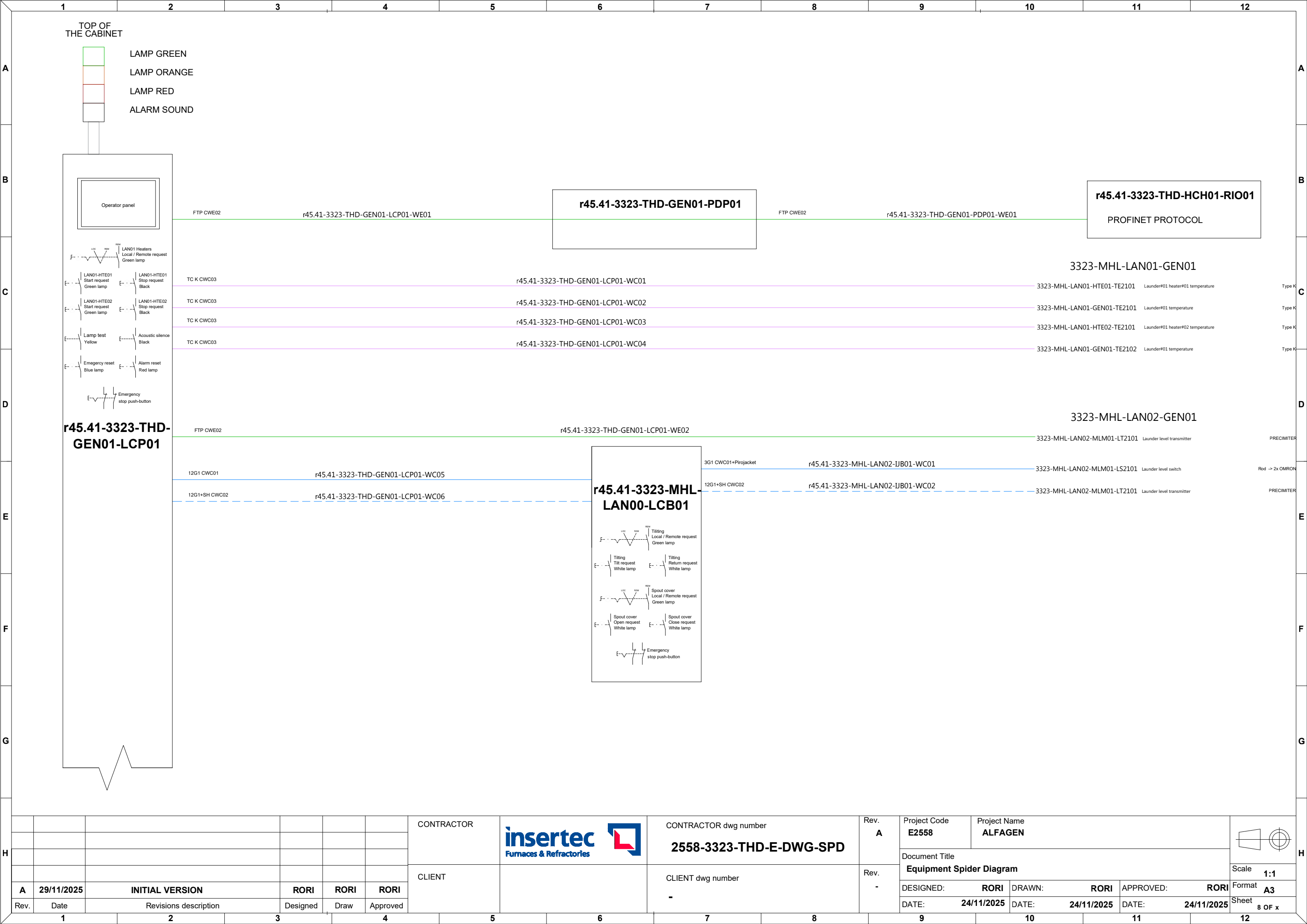
LEGEND


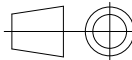
	400Vac Power supply		Regular control signals
	400Vac UPS power supply		Analog & shielded signals
	230Vac Power supply		T/C connection
	230Vac UPS power supply		Communication connection

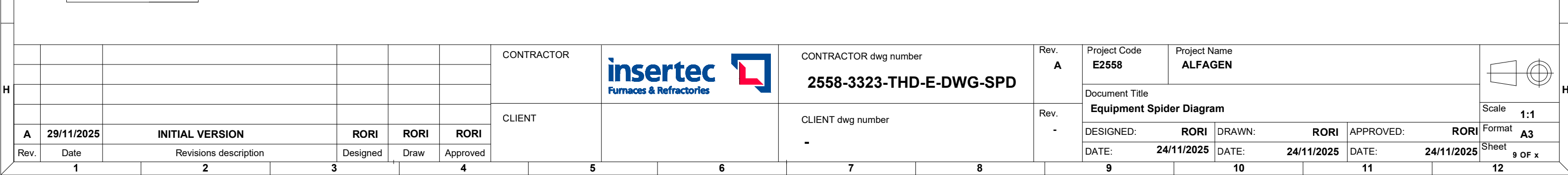
CATEGORY

Power cables
CWP01: Regular power cables
CWP02: Shielded power cable
CWP03: Flexible power cables
CWP04: Regular high temperature power cables
CWP05: Shielded high temperature power cables
CWP06: General use power cable
Instrumentation and control cables
CWC01: Regular instrumentation control cables
CWC02: Shielded instrumentation control cables
CWC03: Thermocouple cable
CWC04: Flexible instrumentation control cables
CWC05: High voltage cables for ignition transformers
CWC06: Regular high temperature instrumentation control cables
CWC07: Shielded high temperature instrumentation control cables
Communication cables
CWE01: Fieldbus communication cable (Inside cabinets)
CWE02: Fieldbus communication cable (Outside cabinets)
CWE03: Optic fibre communication cable

						CONTRACTOR		CONTRACTOR dwg number 2558-3323-THD-E-DWG-SPD	Rev. A	Project Code E2558	Project Name ALFAGEN					
										Document Title						
										Equipment Spider Diagram						
A	29/11/2025	INITIAL VERSION		RORI	RORI	RORI	CLIENT		CLIENT dwg number -	Rev. -	DESIGNED: RORI		DRAWN: RORI		APPROVED: RORI	Scale 1:1
Rev.	Date	Revisions description		Designed	Draw	Approved					Format A3					
											DATE: 24/11/2025		DATE: 24/11/2025		DATE: 24/11/2025	Sheet 7 OF x



						CONTRACTOR		CONTRACTOR dwg number	Rev. A	Project Code E2558	Project Name ALFAGEN				
								2558-3323-THD-E-DWG-SPD		Document Title					
										Equipment Spider Diagram					Scale 1:1
A	29/11/2025	INITIAL VERSION			RORI	RORI	RORI	CLIENT dwg number	Rev. -	DESIGNED: RORI		DRAWN: RORI	APPROVED: RORI		Format A3
Rev.	Date	Revisions description			Designed	Draw	Approved	-		DATE: 24/11/2025		DATE: 24/11/2025	DATE: 24/11/2025		Sheet 8 OF x



HOLDING CHAMBER REMOTE IO


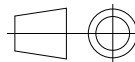
r45.41-3323-THD-HCH01-RIO01

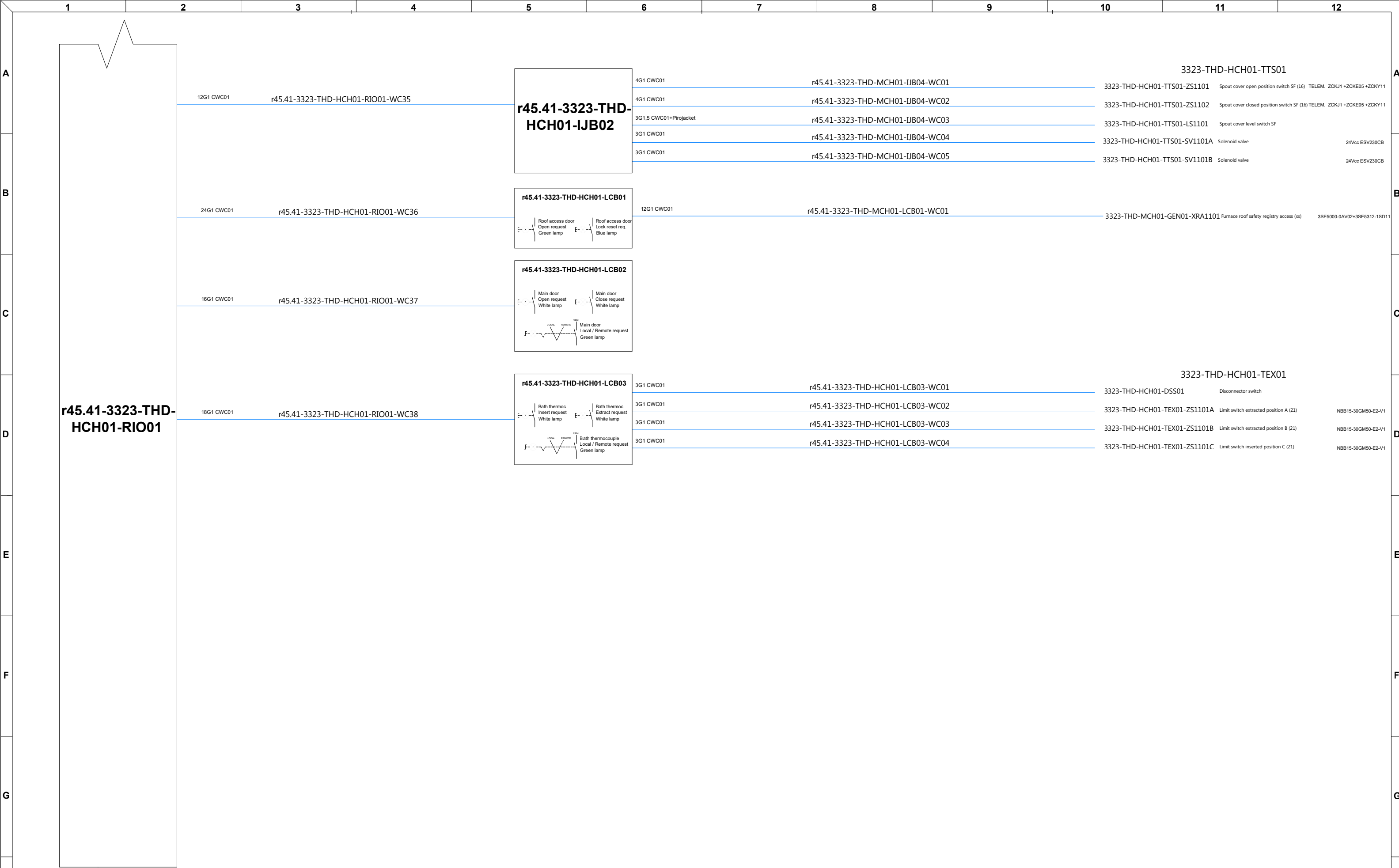
LEGEND


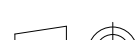
- 400Vac Power supply
- 400Vac UPS power supply
- 230Vac Power supply
- 230Vac UPS power supply
- Regular control signals
- Analog & shielded signals
- T/C connection
- Communication connection

CATEGORY

- Power cables
- CWP01: Regular power cables
- CWP02: Shielded power cable
- CWP03: Flexible power cables
- CWP04: Regular high temperature power cables
- CWP05: Shielded high temperature power cables
- CWP06: General use power cable
- Instrumentation and control cables
- CWC01: Regular instrumentation control cables
- CWC02: Shielded instrumentation control cables
- CWC03: Thermocouple cable
- CWC04: Flexible instrumentation control cables
- CWC05: High voltage cables for ignition transformers
- CWC06: Regular high temperature instrumentation control cables
- CWC07: Shielded high temperature instrumentation control cables
- Communication cables
- CWE01: Fieldbus communication cable (Inside cabinets)
- CWE02: Fieldbus communication cable (Outside cabinets)
- CWE03: Optic fibre communication cable

						CONTRACTOR		CONTRACTOR dwg number 2558-3323-THD-E-DWG-SPD	Rev. A	Project Code E2558	Project Name ALFAGEN			
										Document Title Equipment Spider Diagram			Scale 1:1	
A	29/11/2025	INITIAL VERSION		RORI	RORI					RORI	DESIGNED: RORI	DRAWN: RORI		
Rev.	Date	Revisions description		Designed	Draw	Approved	DATE: 24/11/2025	DATE: 24/11/2025	DATE: 24/11/2025	Sheet 10 OF x				
						CLIENT		CLIENT dwg number -	Rev. -					



H							CONTRACTOR		CONTRACTOR dwg number 2558-3323-THD-E-DWG-SPD	Rev. A	Project Code E2558	Project Name ALFAGEN		H		
							CLIENT		CLIENT dwg number -	Rev. -	Document Title Equipment Spider Diagram				Scale 1:1	
	A	29/11/2025	INITIAL VERSION		RORI	RORI					RORI	DESIGNED: RORI	DRAWN: RORI		APPROVED: RORI	Format A3
	Rev.	Date	Revisions description		Designed	Draw					Approved	DATE: 24/11/2025	DATE: 24/11/2025		DATE: 24/11/2025	Sheet 12 OF x
	1	2	3	4	5	6	7	8	9	10	11	12				

CVS POWER AND CONTROL PANEL
r45.41-3323-THD-CVT01-POP01


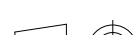
SPARE FOR FUTURE CONNECTION

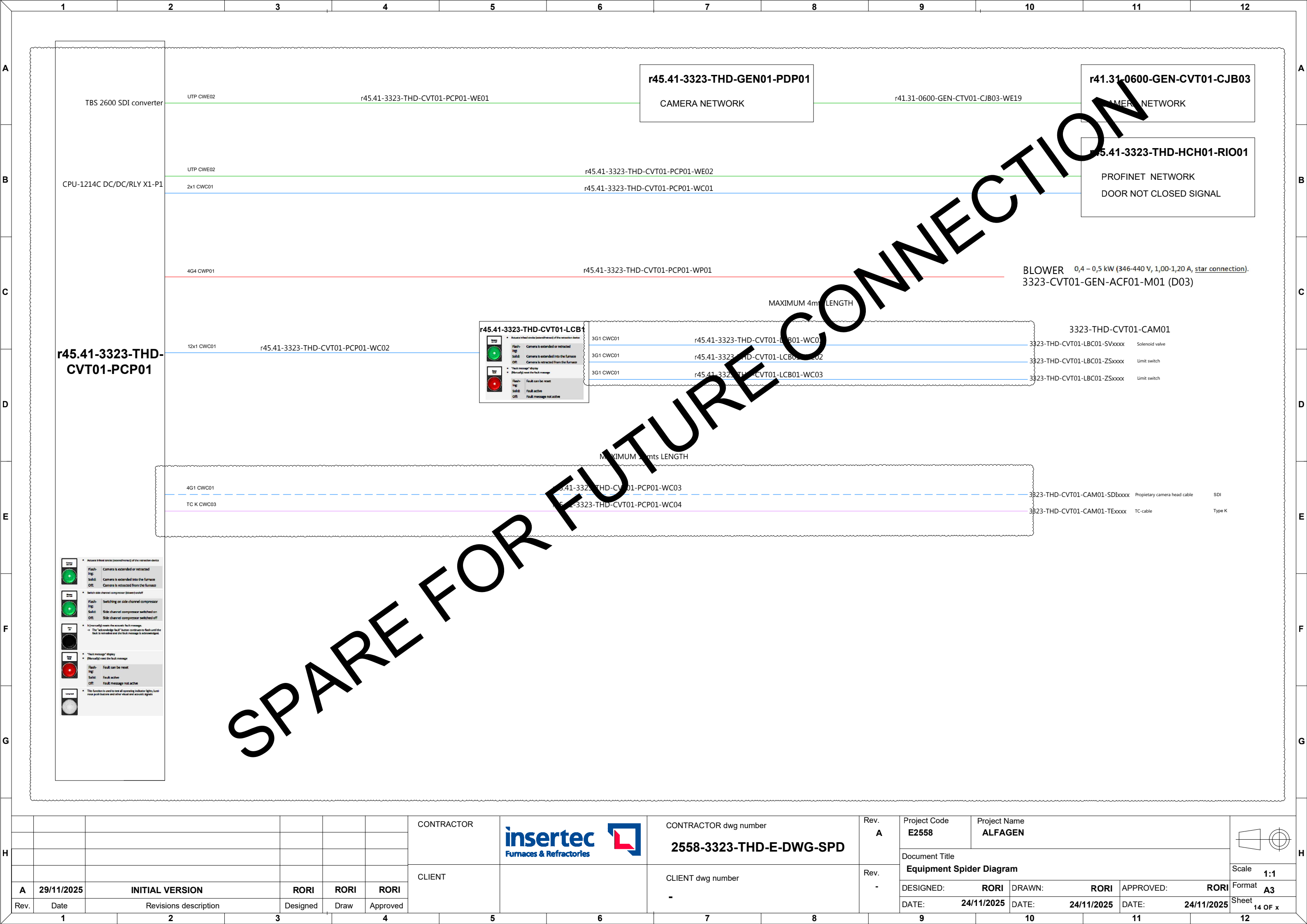
LEGEND



- 400Vac Power supply
- 400Vac UPS power supply
- 230Vac Power supply
- 230Vac UPS power supply
- Regular control signals
- Analog & shielded signals
- T/C connection
- Communication connection

CATEGORY

- Power cables
- CWP01: Regular power cables
- CWP02: Shielded power cable
- CWP03: Flexible power cables
- CWP04: Regular high temperature power cables
- CWP05: Shielded high temperature power cables
- CWP06: General use power cable
- Instrumentation and control cables
- CWC01: Regular instrumentation control cables
- CWC02: Shielded instrumentation control cables
- CWC03: Thermocouple cable
- CWC04: Flexible instrumentation control cables
- CWC05: High voltage cables for ignition transformers
- CWC06: Regular high temperature instrumentation control cables
- CWC07: Shielded high temperature instrumentation control cables
- Communication cables
- CWE01: Fieldbus communication cable (Inside cabinets)
- CWE02: Fieldbus communication cable (Outside cabinets)
- CWE03: Optic fibre communication cable

						CONTRACTOR		CONTRACTOR dwg number 2558-3323-THD-E-DWG-SPD	Rev. A	Project Code E2558	Project Name ALFAGEN			
										Document Title Equipment Spider Diagram				
A	29/11/2025	INITIAL VERSION	RORI	RORI	RORI					DESIGNED: RORI	DRAWN: RORI	APPROVED: RORI	Scale 1:1	
Rev.	Date	Revisions description	Designed	Draw	Approved	CLIENT		CLIENT dwg number -	Rev. -	DATE: 24/11/2025	DATE: 24/11/2025	DATE: 24/11/2025	Format A3	
													Sheet 13 OF x	



						CONTRACTOR	<div><div>insertec</div><div>Furnaces & Refractories</div></div> <div></div>	CONTRACTOR dwg number	Rev. A	Project Code	Project Name				<div></div>								
												E2558	ALFAGEN										
												Document Title					Scale						
A	29/11/2025	INITIAL VERSION			RORI	RORI	RORI	CLIENT		CLIENT dwg number	Rev. -	Equipment Spider Diagram					1:1						
Rev.	Date	Revisions description			Designed	Draw	Approved					DESIGNED:	RORI	DRAWN:	RORI	APPROVED:	RORI	Format					
												DATE:	24/11/2025	DATE:	24/11/2025	DATE:	24/11/2025	Sheet					
1		2		3		4		5		6		7		8		9		10		11		12	

CVS POWER AND CONTROL PANEL

r45.41-3323-THD-CVT01-POP02


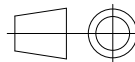
SPARE FOR FUTURE CONNECTION

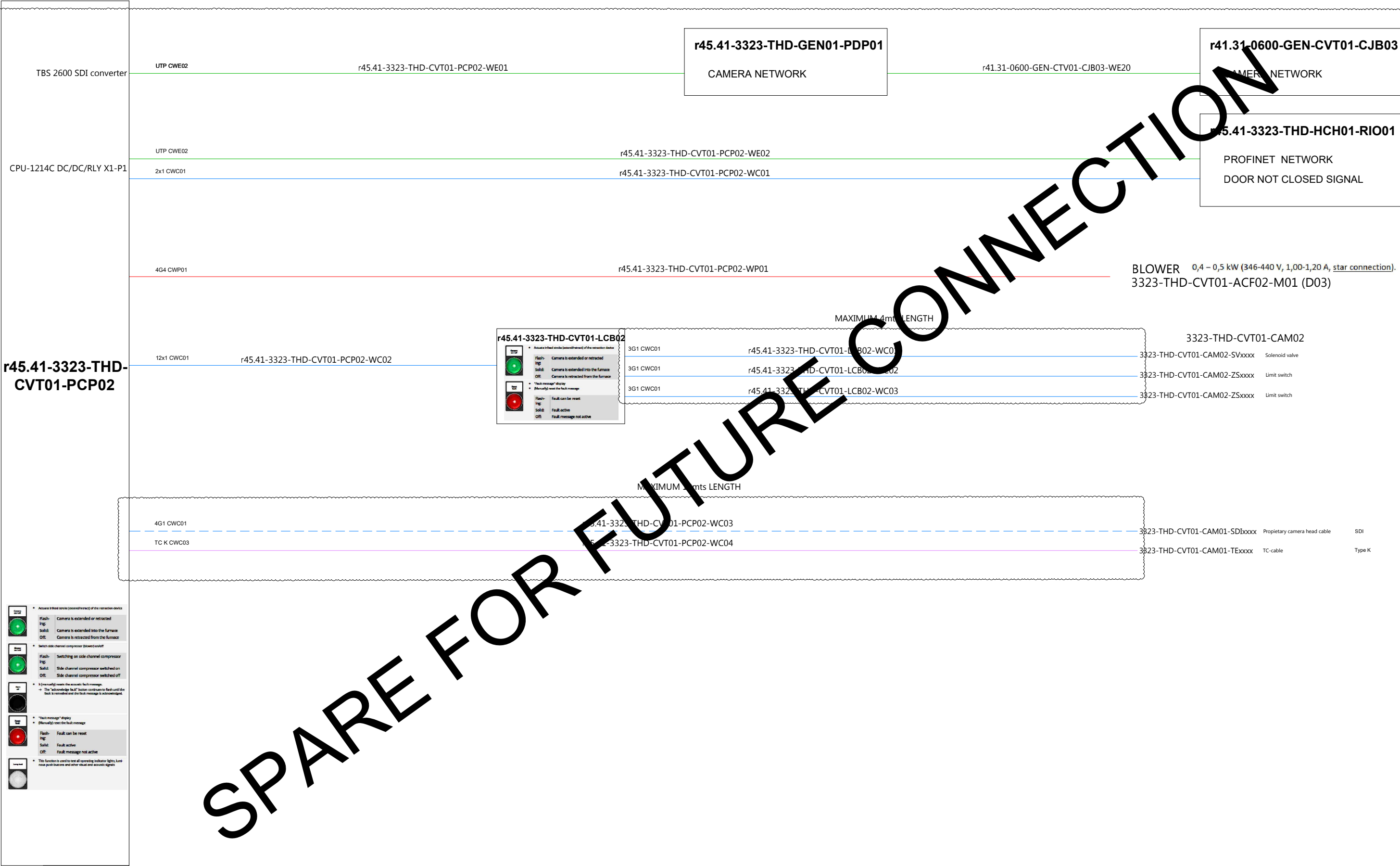
LEGEND


- 400Vac Power supply
- 400Vac UPS power supply
- 230Vac Power supply
- 230Vac UPS power supply
- Regular control signals
- Analog & shielded signals
- T/C connection
- Communication connection

CATEGORY

- Power cables
- CWP01: Regular power cables
- CWP02: Shielded power cable
- CWP03: Flexible power cables
- CWP04: Regular high temperature power cables
- CWP05: Shielded high temperature power cables
- CWP06: General use power cable
- Instrumentation and control cables
- CWC01: Regular instrumentation control cables
- CWC02: Shielded instrumentation control cables
- CWC03: Thermocouple cable
- CWC04: Flexible instrumentation control cables
- CWC05: High voltage cables for ignition transformers
- CWC06: Regular high temperature instrumentation control cables
- CWC07: Shielded high temperature instrumentation control cables
- Communication cables
- CWE01: Fieldbus communication cable (Inside cabinets)
- CWE02: Fieldbus communication cable (Outside cabinets)
- CWE03: Optic fibre communication cable

						CONTRACTOR		CONTRACTOR dwg number 2558-3323-THD-E-DWG-SPD	Rev. A	Project Code E2558	Project Name ALFAGEN			
										Document Title Equipment Spider Diagram			Scale 1:1	
A	29/11/2025	INITIAL VERSION		RORI	RORI					RORI	Format A3			
Rev.	Date	Revisions description		Designed	Draw	Approved		CLIENT dwg number -	Rev. -	DESIGNED: RORI	DRAWN: RORI	APPROVED: RORI	Sheet 15 OF x	



						CONTRACTOR	<div><div>insertec</div><div>Furnaces & Refractories</div></div> <div></div>	CONTRACTOR dwg number	Rev. A	Project Code E2558	Project Name ALFAGEN			<div><div></div><div></div></div>	
								2558-3323-THD-E-DWG-SPD		Document Title					
										Equipment Spider Diagram			Scale 1:1		
A	29/11/2025	INITIAL VERSION		RORI	RORI	RORI	CLIENT	CLIENT dwg number -	Rev. -				Format A3		
Rev.	Date	Revisions description		Designed	Draw	Approved				DATE: 24/11/2025			DATE: 24/11/2025	DATE: 24/11/2025	Sheet 16 OF x